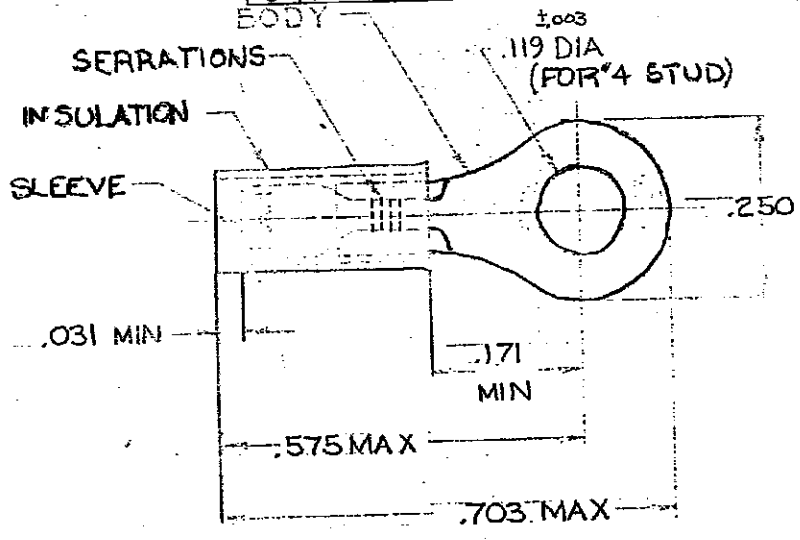


6 14 (P)

788776

DRAWING MADE IN ACCORDANCE WITH
 21961 BY AMP INCORPORATED. ALL
 RIGHTS RESERVED. AMP PRODUCTS
 COVERED BY PATENTS AND/OR
 PATENTS PENDING.

REVISIONS			
LETTER	DESCRIPTION	DATE	APPROVED
C	REVISION REV/ADDED TAPE NO. B-630	4-1-70	FCY
D	REV PER P-9747	9-9-82	HT
E	REV PER P-9261	12-20-82	SM
F	REACTIVE PER P-10119	7-11-83	PM
G	REV 10720-0066-93	4-19-93	TO/ms



FOR .115 TO .170 WIRE INSULATION DIA.
 TONGUE MATERIAL THK. = .031 ±.002

100	LOOSE PC BOX	8-328996-1	BODY & SLEEVE: COPPER (QQ-C-576) TIN PL (ML-T-10727) INSULATION: NYLON (MIL-M-20399) TYPE I COLOR: BLUE
1	328996 ON TAPE	2-328996-1	
1	WIRE TERMINAL	328996	
QTY DESCRIPTION PART NO.			MATERIAL & FINISH
UNLESS OTHERWISE SPECIFIED DIMENSIONS ARE IN INCHES TOLERANCES ARE: FRACTIONS DECIMALS .003 .003		CONTROL NO. 3-20-70 4-1-70 4-2-70 4-2-70	AMP INCORPORATED HARRISBURG, PENNSYLVANIA
SEE TABLE		NAME WIRE TERMINAL P.D.G-RING TONGUE WIRE SIZE 16-14	SIZE 328996
		SIZE A 00779	PART NO. 328996

CUSTOMER DRAWING